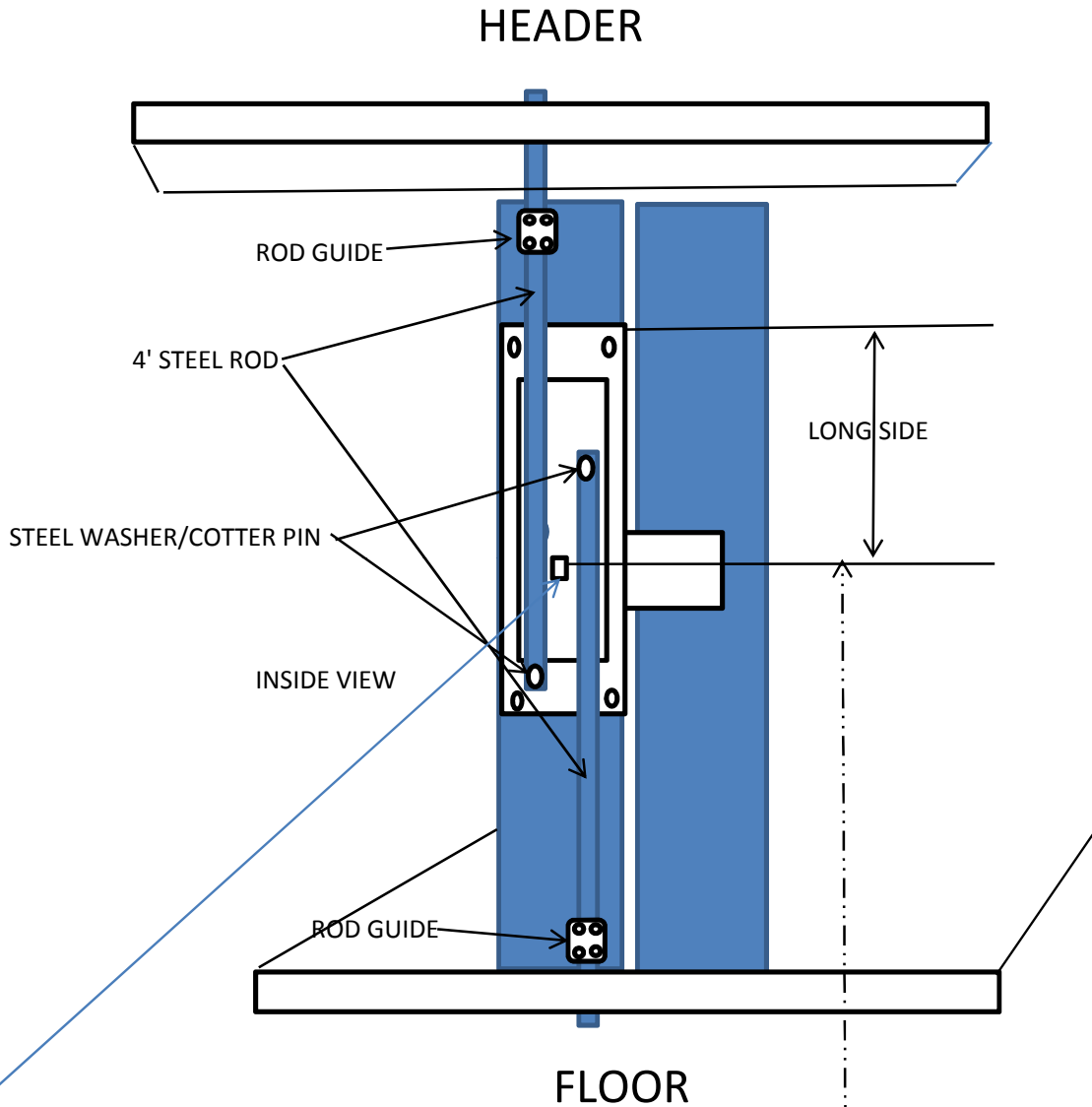


3 POINT LOCK SYSTEM



- STEP 1. PLACE 3 POINT LOCK ON EDGE AND CENTER TOP TO BOTTOM (LONG SIDE UP).
- STEP 2. USE PENCIL TO MARK CENTER FOR LOCKHANDLE. SCREW DOWN W/ 4 SCREWS
- STEP 3. PLACE ROD TOP AND BOTTOM. ADD ROD GUIDES SCREW ROD GUIDES DOWN.
- STEP 4. CUT RODS TO LENGTH GOING THRU HEADER AND FLOOR.
- STEP 5. USE COTTER PINS AND WASHERS TO ATTACH RODS.
- STEP 6. ADD L STYLE HANDLE TO FACE OF DOOR, MAKE SURE HANDLE COVERS SCREW WHEN LOCKED.
- STEP 7. PULL DOOR CLOSED TOGHT MARL HOLES IN HEADER AND FLOOR FOR RODS.
- STEP 8. CLOSE DOOR FROM OUTSIDE TURN HANDLE .

THIS WILL ASSIST YOU IN THE INSTALLATION (ALL INSTALLS CAN VARY.)

